



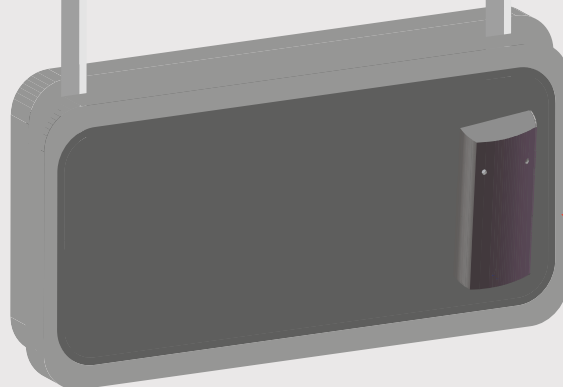
LOKE System Tester

NEW
For individual shops
and chains!

**Groundbreaking up-grading of your
anti-shoplifting installation!**



Remote
controller

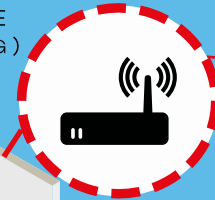
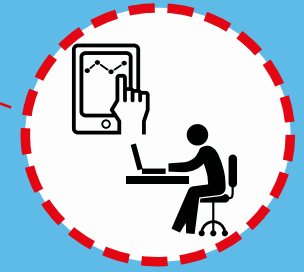


Antenna
Unit

A must in any shop with an anti-shoplifting system

HEAD OFFICE
SECURITY MANAGER

LOCAL NETWORK
INTERFACE
(Ethernet or 3G)



REMOTE USE

Remote monitoring of functionality of EAS installations and/or individual antennas

Remotely triggered EAS-alarms – even in selected individual antennas!
Remote test of staff reaction to alarms

Remote monitoring of alarms from any electronically protected merchandise

STATISTICS : of alarms and functionality !



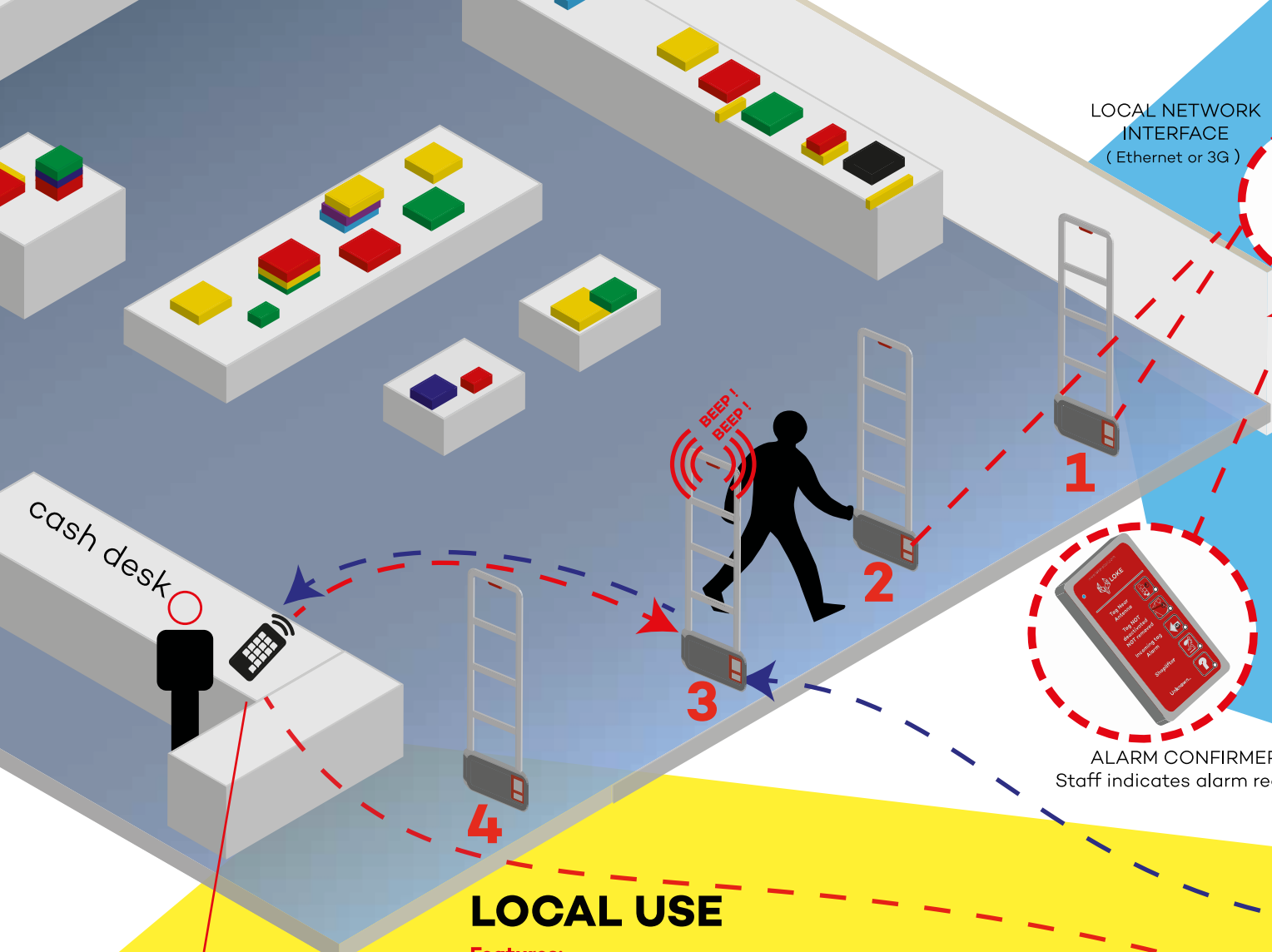
ALARM CONFIRMER
Staff indicates alarm reason



professional
JAMMING



PAGER FUNCTION
Call to security guard



LOCAL USE

Features:

Local wireless test of EAS-installation

Check all or selected individual antennas with one single press on the Remote Controller

Triggered Alarms

Pls. ask your EAS-supplier for more information about this very useful feature!

Anti-Jam Detector (AM-installations)

Discreet detection of jammer activity, wireless transmission to Remote Controller.



Security or Service Call

Wireless PAGER-contact to key persons – or Service Calls from fitting rooms or anyw here in the shop (See special Brochure: Service Call)

Installation

Very easy and simple, NO wires – all wireless!



REMOTE CONTROLLER



ALARM CONFIRMER

To be used by the local staff to confirm and indicate reasons of alarms to the chain security management (via internet) - including also test of reaction to remotely Triggered Alarms.

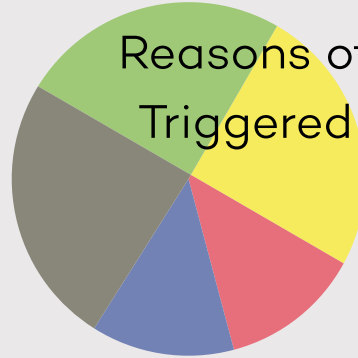
STATISTICS :

System ON - OFF

Numbers of alarms

Reasons of alarms

Triggered alarms



SYSTEM TESTER - TECHNICAL DETAILS :

Compatible with AM - RF - RFID
Radio frequency 868 Mhz - bi-directional
Range 50 mt.
Battery operated

Installation

Very easy and simple, NO wires – all wireless!

Loke System Tester closes the last big hole in your anti-shoplifting installations !



Assistance Call & Pager Function

These useful features can be added to the System Tester installations.
(See special Brochure: Assistance Call)

CE-approved - Patent pending - Made in the EU.

A must in any shop with an anti-shoplifting system